





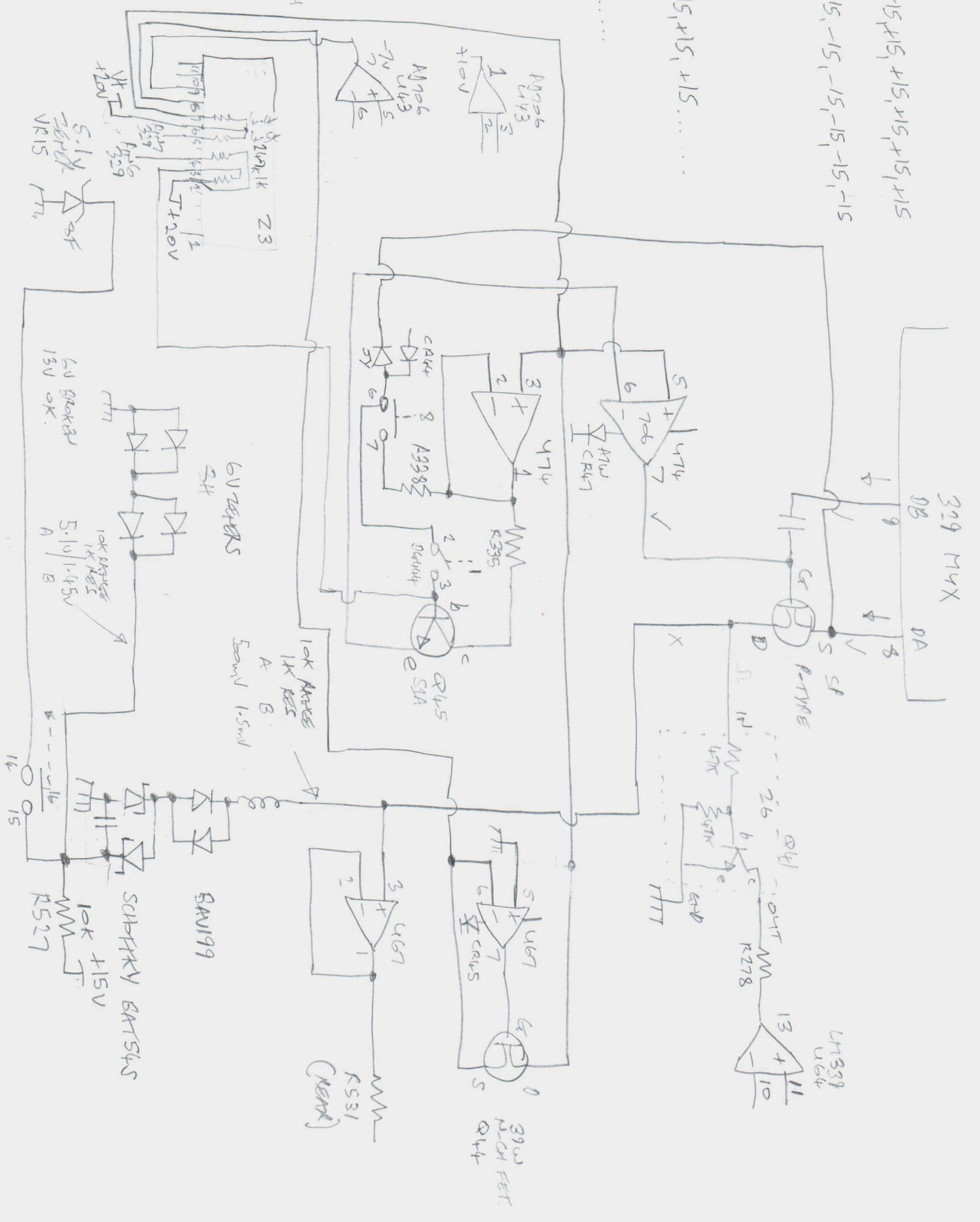
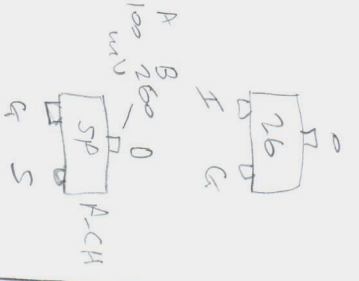
LH339

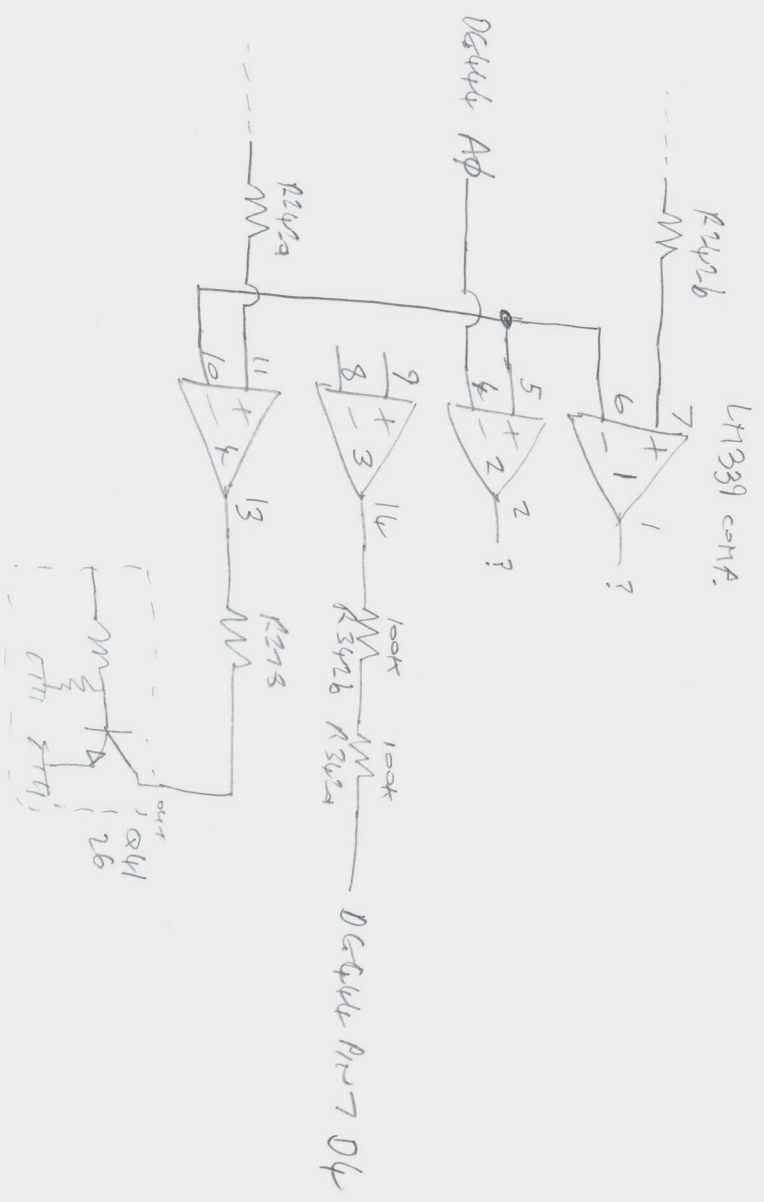
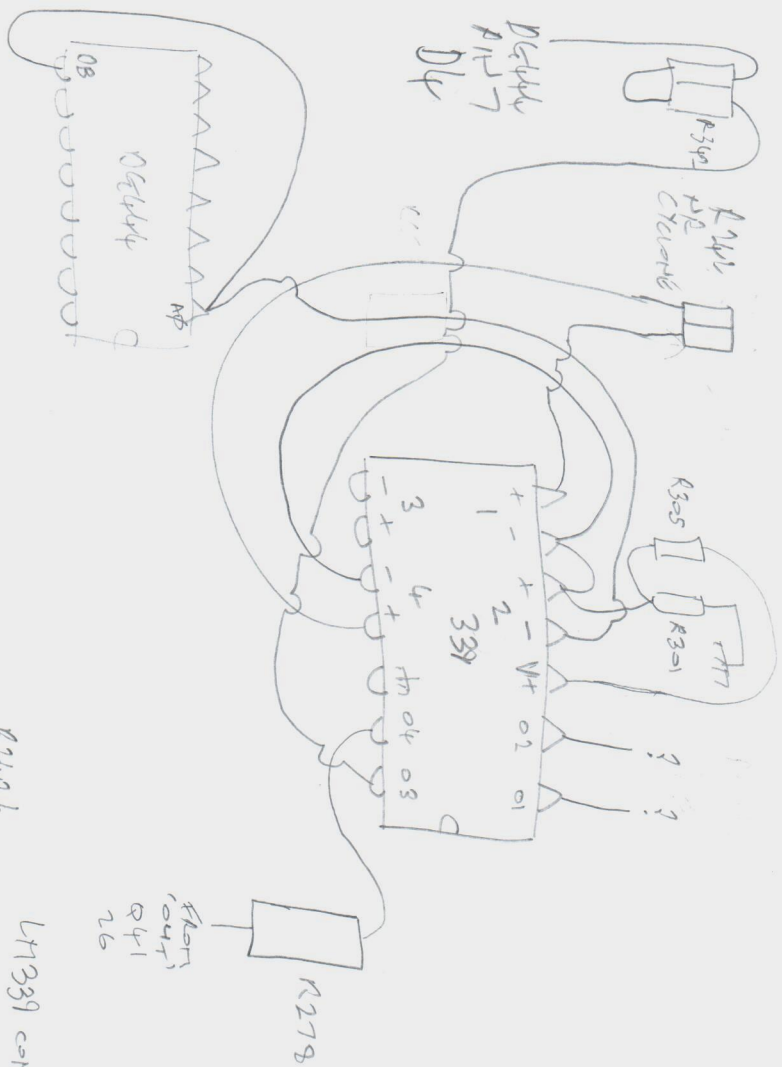
Ground

- 14 +15, -15, -15, +15, +15, +15, +15, +15
- 13 AU -15V
- 2 +15, -15, -15, -15, -15, -15, -15, -15
- 1 AU -15

BND

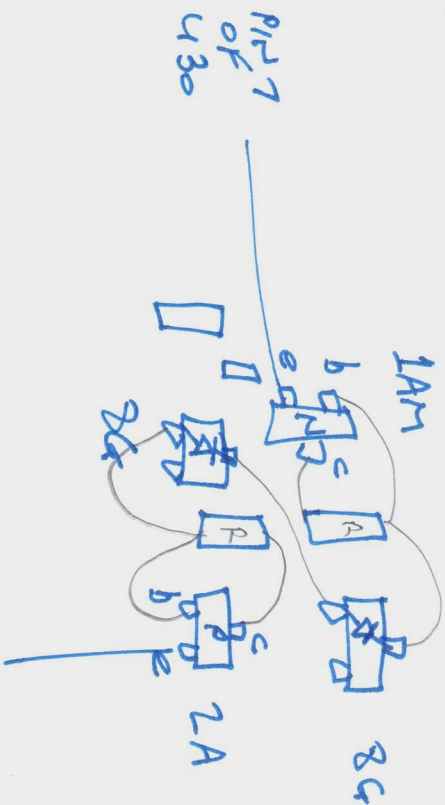
- 14 +15, -15, -15, +15, +15, +15, +15, +15
- 13 AU -15
- 2 +15, -15, -15, -15, -15, -15, -15, -15
- 1 AU -15







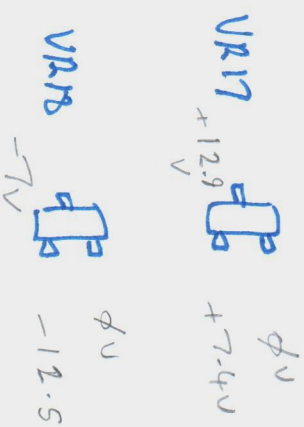
REAR



1A = MMBT2222 NPN

2A = MMBT2322 PNP

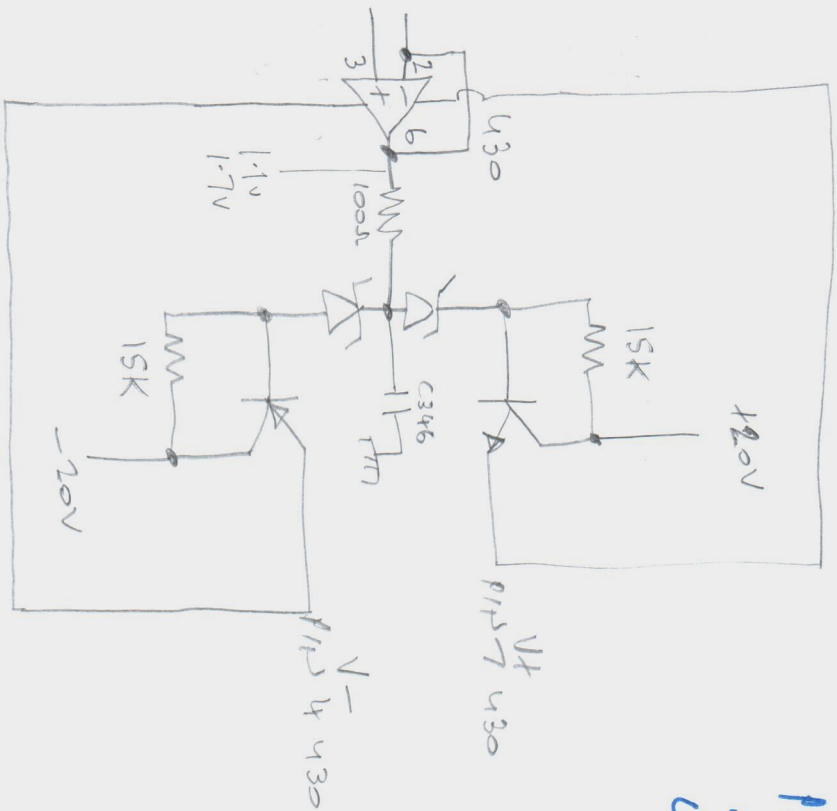
VR17 = 12.9V



VR2 = 12.5V



VR1 = 1.7V



VR1 = 1.7V

12.0V

VR1 = 1.7V

VR1 = 1.7V

15K

12.0V

VR1 = 1.7V

VR2 = 12.5V



471

(A)

	GRADE			
PL	1	16	8	9

105L L H<sub>3.3</sub> H<sub>5.6</sub> L

1055L H<sub>2.1</sub> L L H<sub>3.3</sub>

1KR H<sub>3.3</sub> L L H<sub>3.3</sub>

1OKL H<sub>3.3</sub> L L H<sub>3.3</sub> →

100KL H<sub>3.3</sub> H<sub>3.3</sub> L H<sub>3.3</sub>

1M5 H<sub>3.3</sub> H<sub>3.3</sub> L H<sub>3.3</sub>

10M5 H<sub>3.3</sub> H<sub>3.3</sub> L H<sub>3.3</sub>

100M5 H<sub>3.3</sub> H<sub>3.3</sub> L H<sub>3.3</sub>

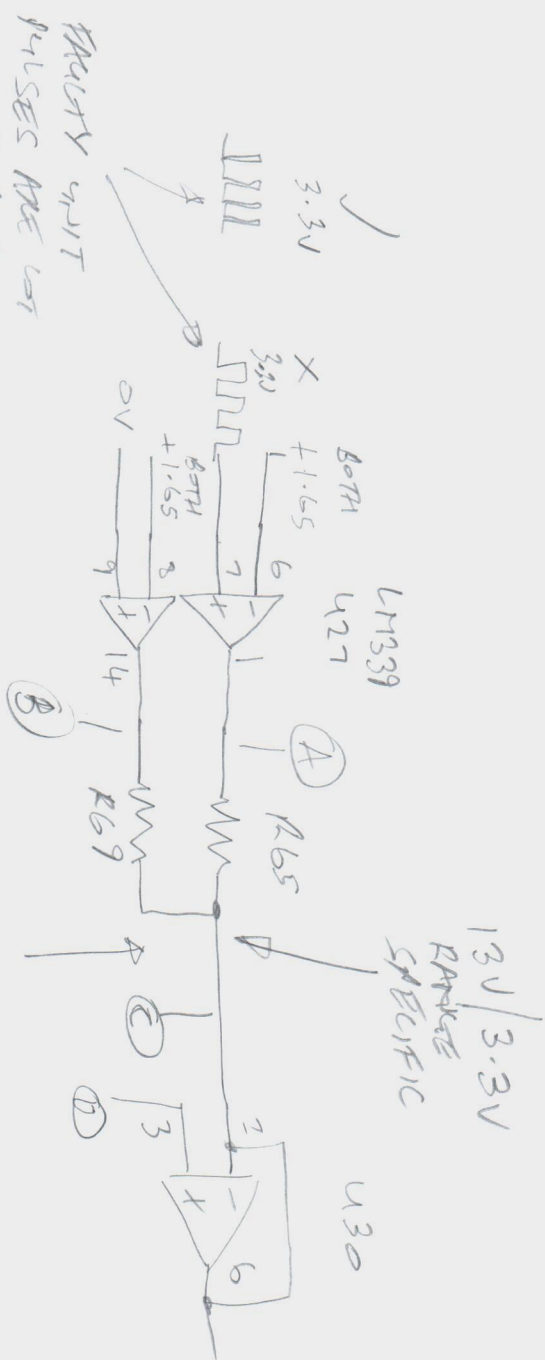
1G5 H<sub>3.3</sub> H<sub>3.3</sub> L H<sub>3.3</sub>

① - BAD - - Good

U30 A/D 3

100Ω +1.7V +12.7V

1000Ω +1.1V +3.3V



EXACTLY WHAT PULSES ARE NOT LONGER VARIATION BOTH POSITIVE CHANGES WITH NOISE SEVERE.

EXACTLY + 1.7V / 1.1V

Good

100Ω (A) +15V



1000Ω (A) -+2.5V -15V



100Ω (B) -15V

1000Ω (B) -15V

100Ω (C) +1.3V

1000Ω (C) +3.3V

BAD

100Ω (A) 1.7V -15V



1000Ω (A) 1.1V -15V



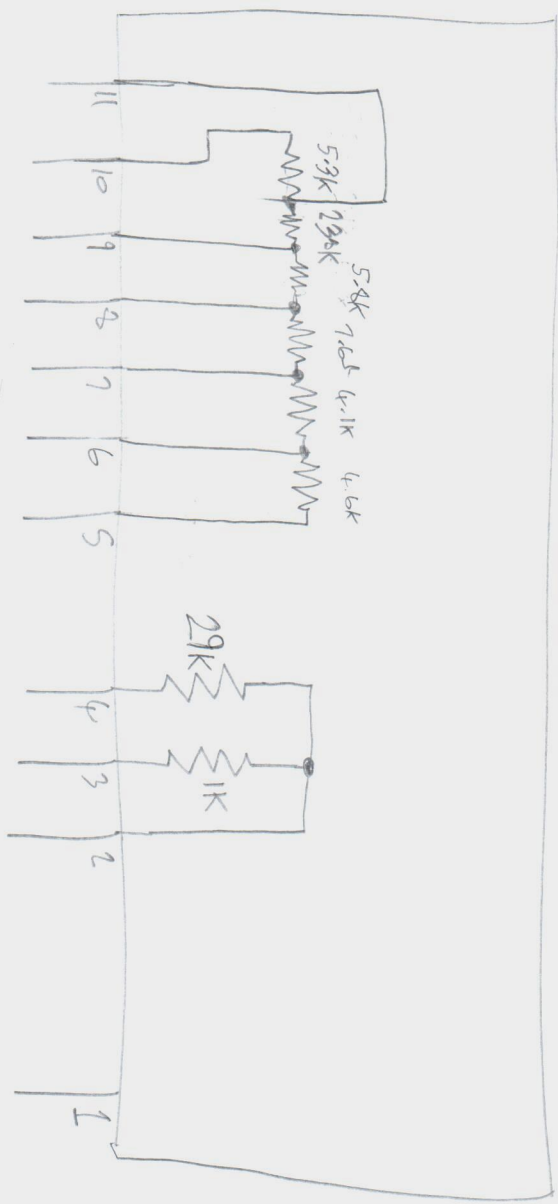
100Ω (B) -15V

1000Ω (B) -15V

100Ω (C) +1.7V

1000Ω (C) +1.1V





VALUES MEASURED IN-CIRCUIT (WAS OFF!).

TO BE CHECKED.